



Additix PE

Thickening and thixotropifying additive for epoxy and polyurethane products



WHERE TO USE

Additix PE is an additive which must only be used together with epoxy and polyurethane products to make them thicker and thixotropic.

Some application examples

- When 2-5% in weight is added to **Primer MF** or **Primer SN**, the porosity of the concrete in the substrate is closed to avoid the formation of tiny bubbles of air and defects which rise to the surface after the successive application of resin coatings.
- When added to **Mapecfloor I 30 SL** or **Mapecfloor I 300 SL**, the product becomes thicker so that it may be used to form shells and base-blocks.
- When added to **Mapeccoat I 24**, **Mapeccoat W**, **Biblock** or polyurethane systems, the thixotropicity of the products is increased so that they may be used for high-thick coatings or for treating walls.

TECHNICAL CHARACTERISTICS

Additix PE is a compound in powder form made up of a polythene fibre charge which has been specially developed to make epoxy and polyurethane resins thicker and thixotropic.

APPLICATION PROCEDURE

After blending together the components which make up the epoxy or polyurethane resin, blend in **Additix PE** continuously until a uniform, homogenous compound is formed.

The amount of **Additix PE** to be used depends on the level of thixotropicity required in the product.

CONSUMPTION

Between 2 and 5% in weight of the resin, according to the level of thixotropicity required.

PACKAGING

Available in 1 kg drums, volume 12 l.

STORAGE

Additix PE must be stored in its original packaging in a dry place.

SAFETY INSTRUCTIONS FOR PREPARATION AND APPLICATION OF THE PRODUCT

Additix PE must be added to the resin without forming powder.

Avoid inhaling the product and contact with the skin and the eyes by using protective goggles, gloves and a face-mask while both mixing and applying the product. If it comes into contact with the skin, wash it off thoroughly with soap and water. If there is an allergic reaction to the product, seek medical advice. If it comes into contact with the eyes, rinse thoroughly with running water and seek medical advice.

FOR PROFESSIONAL USE ONLY.

Additix PE



Primer MF thickened with Additix PE



Grouting a joint with Primer MF admixed with Additix PE

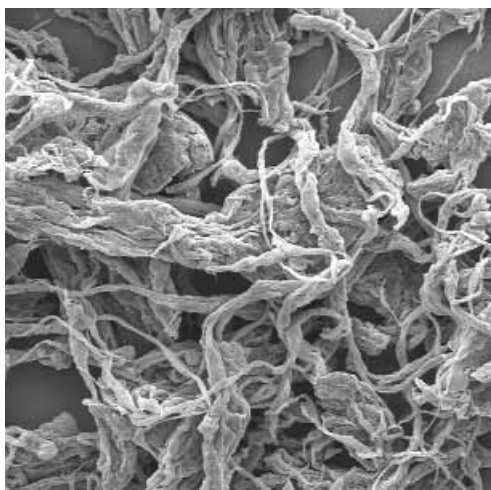


Mixing Additix PE in Primer MF

TECHNICAL DATA (typical values)

PRODUCT IDENTITY

Colour:	white
Density (kg/m ³):	960
Swelling in water (%):	0
Length of the fibres (mm):	0.10-0.25
Thickness of the fibres (mm):	approx. 6
Fibre content per gram of product:	approx. 150,000,000
Surface area of the fibres (m ² /g):	approx. 7.5
Hazard classification according to EC 99/45:	none. Before using refer to the "Safety instructions for the preparation and application" paragraph and the information on the packing and Safety Data Sheet
Customs class:	3901 20 90



Microscope photo of Additix PE.

WARNING

While the indications and guidelines contained in this data sheet correspond to the company's knowledge and wide experience, they must be considered, under all circumstances, merely as an indication and subject to confirmation only after long-term, practical applications. Therefore, anybody who undertakes to use this product, must ensure beforehand that it is suitable for the intended application and, in all cases, the user is to be held responsible for any consequences deriving from its use.

All relevant references of the product are available upon request



BUILDING THE FUTURE

MAPEI GROUP CERTIFIED MANAGEMENT SYSTEMS (Quality, Environment and Safety)

MAPEI S.p.A. - ITALY	MAPEI CORP - U.S.A.	MAPEI FAR EAST Pte Ltd MAPEI MALAYSIA SON BHD	MAPEI s.r.o. - CZECH REP.			
MAPEI FRANCE	MAPEI INC - CANADA	RESCON MAPEI AS - NORWAY	MAPEI KIL - HUNGARY	MAPEI ARGENTINA S.A.	MAPEI SUISSE SA	

www.mapei.com